



MoreRoyal®

TERRACE

*For more
information*

talgo.no

THIS IS MøreRoyal®

MøreRoyal® is first-class, fully treated timber ready for use without any form of further treatment. It features unique properties that are ideal for anyone who wants to avoid spending time on maintenance.

MøreRoyal® cladding, roofing, laths and terrace boards are frequently used for homes and major projects. The Talgø PlusConcept, consisting of conservatories and gazebos for outdoor areas are also based on products in MøreRoyal® quality.

Over the years, MøreRoyal has been certified, classified and evaluated from raw material to finished buildings, and is deemed to be a highly eco-friendly product. That makes MøreRoyal a safe choice, now and in the future.



ECOproduct 

Terrace board UNO with grooves
grey RG25
Photo: Per Flåthe

Front cover:
Terrace board UNO with grooves
grey RG25
Photo: Lediard Foto

MANUFACTURE OF MøreRoyal®

PRESSURE-IMPREGNATED MATERIALS

During the manufacturing process, MøreRoyal® timber undergoes two treatments. It is first pressure-impregnated with an impregnation agent.



BOILED IN OIL UNDER VACUUM

It is then boiled for 6-8 hours in oil under vacuum, during which a full litre of oil per m2 is absorbed into the wood. The result is dried timber which is oil-impregnated on all sides. The oil seal reduces moisture absorption, swelling, shrinkage and cracking, and provides a more stable product. Before the boiling process, pigment can be added to the oil, which effectively boils the colour into the wood. Fully-treated MøreRoyal is highly resistant to UV radiation, and a terrace will not need maintenance to retain the quality of the material until after 6-7 years. If you want to freshen up the colours before then, it is a subjective, cosmetic choice.



PROVIDES UNIQUE PROPERTIES

- 1 LESS SPLINTERING
- 2 LESS CRACKING
- 3 MINIMUM SHRINKAGE
MINIMUM SWELLING
= EXTREMELY STABLE TIMBER
- 4 LONGER MAINTENANCE INTERVALS
MEAN LESS MAINTENANCE



WHY MoreRoyal®



1 SIMPLE INSTALLATION – FULLY TREATED

No treatment needed before or after. Ready for use! Our materials can be installed any time of year and under any climate conditions without having to take the usual precautions.

2 PRODUCT BENEFITS

First grade timber is graded according to NS EN 3188 for pressure-impregnated terrace boards – only the best is good enough.

To become a MoreRoyal® product, the material has to go through special grading to ensure top quality.

Treated on all sides.

The MoreRoyal® process treats the materials on all sides – under, over, sides and ends.

This retains the properties of the timber, regardless of what it's exposed to.

Stable

MoreRoyal® materials give minimum warping, shrinking, swelling and cracking.

Non-rot

The MoreRoyal® treatment encapsulates the impregnation in the wood, ensuring extreme rot protection.

That only serves to enforce the claim of complete rot resistance for a MoreRoyal® product when correctly installed and used (Class AB above ground). That's why we give a 50-year guarantee against rot!

(NB: when used correctly. See our websites at www.talgo.no for more details).

Less splintering

Materials that are MoreRoyal® treated are protected against changes caused by temperature and humidity.

That means less splintering.

3 PERFECT FOR THE NORDIC CLIMATE

The warm, humid west-Norwegian climate is spreading, meaning higher chances of rot damage in houses. We are going to have to use other and more rot-resistant materials than we do at present*.

Sources: Climate Researcher Hans Olav Hygen of the Norwegian Meteorological Institute and Anders-Johan Akmås, Byggforsk – on climate change and material choice.

4 COSMETIC MAINTENANCE

Let's be honest, NOTHING is maintenance-free. But you can choose to make maintenance very simple. The MoreRoyal® process boils oil into the wood, a treatment that is highly durable. However, the weather, wind and sun will always affect organic materials. And because time is a precious commodity in our modern society, being able to spend less time on maintenance (at no risk of rot) is a major benefit. MoreRoyal terrace boards can easily go 6-7 years with no need of freshening up. During that time, whether you want to freshen up with MoreRoyal® Exclusive Terrace Oil is a cosmetic choice, depending on how the materials are used and what they are exposed to. Always use MoreRoyal® oils for freshening up to fulfil the guarantee terms.



COLOURS

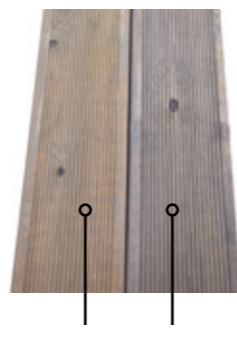
MoreRoyal®

MøreRoyal® TERRACE BOARD – COMES IN 3 COLOURS

The colours are transparent, making the wood's grain visible and giving the materials a living surface. There can also be a slight variation in surface appearance, due to heartwood, sapwood and knots absorbing different amounts of oil and pigment.



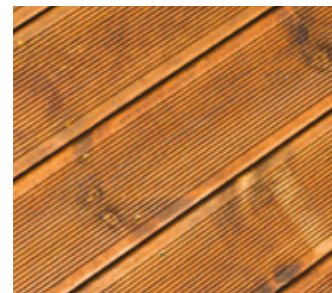
When fresh, the grey colour will appear greenish, as the impregnating oil can show through the transparent colouring. But after only a short period of exposure to sunlight and the weather, the colour will start to change, and after the first winter, the boards will be a mid-grey.



Fresh MøreRoyal® grey *MøreRoyal® grey exposed to sunlight for 3 months*



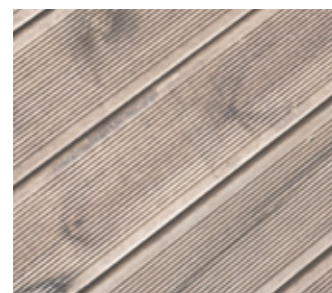
Sørenga. Oslo. Builder: Veidekke
Terrace board DUO brown RB10



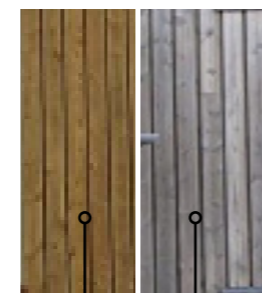
Any wood can fade, including MøreRoyal®. The brown colour will become lighter due to the effects of the weather. Some love the lighter colours, others prefer the original. To restore the original colour only requires a coat of CLEAR MøreRoyal® oil – preferably applied by roller.



MøreRoyal® brown when new *MøreRoyal® brown after 2-3 years of exposure to the sun*



The neutral colour will appear as a golden brown when fresh at the time of purchase. It's saturated in oil, and the impregnating oil can show through the transparent colouring. After exposure to the sun and weather, the colour will change to a weathered grey. Remember that areas under a roof or in the shade will not react in the same way as those directly exposed to the weather.



MøreRoyal® neutral when new *MøreRoyal® neutral after 2-3 years of exposure to the sun*

COLOURS AND TIME

All MøreRoyal® colours will gradually fade with the effects of the weather. Those facing the south and west will fade first. In terms of quality, there is no difference however. The oil is boiled into the wood, and protects it. Variations in pigment composition are what decide the marginal differences.

NCS COLOUR CODES

Finding NCS colour codes that are approximately the same as MøreRoyal® colours is difficult. MøreRoyal® has transparent colours, and the covered surfaces that NCS colours give will never provide the same result as transparent colours. Planed and unplanned surfaces also have different levels of pigment absorption, making comparison even more difficult. To follow are the nearest codes:

MøreRoyal® RB.10 Brown:

NCS S 8010-Y50R.
Nearest RAL colour: Ral 8014

MøreRoyal® RG.25 Grey:

NCS S 7005-Y-20R.
Nearest RAL colour: Ral 7039

These NCS and RAL codes are only a guide. The materials also change over time, and what applies to newer compared to older materials will vary. Consult your paint supplier to find the best result.

MAINTENANCE INTERVALS

MøreRoyal® DUO and UNO terrace boards have been treated with oil before delivery, and no more oil needs to be applied for the first few years. Any surface oil visible upon delivery should be wiped off with a cloth.

Natural RO.0 will weather to become grey over time, whilst pigmented wood will be affected by UV radiation, which can cause it to gradually become paler. That's why the different colours have different maintenance intervals. Neutral RO.0 can easily last for many years without colour maintenance once it has attained the popular weathered grey patina. The grey RG25 will also require freshening up a little in the first few years, while the brown B10 is the one that loses some of its colour the quickest, and fades due to the weather.

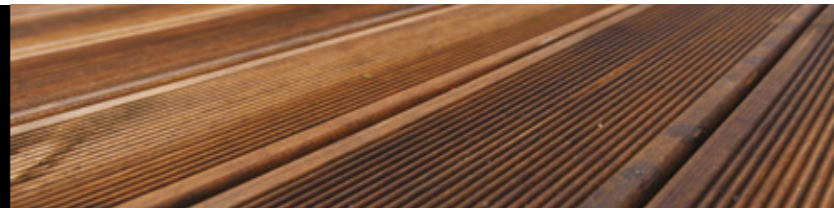
MøreRoyal® Terrace Oil Exclusive should be used for maintaining MøreRoyal® terraces. When maintenance is needed is a subjective cosmetic choice. Maintenance intervals for MøreRoyal® terrace boards depends on how much the product is exposed to the wind, weather and sun.

If the oil forms a film on the surface, there is a big risk that it will peel off later. Excess oil will also foster the growth of surface fungus. Always wipe excess oil off after application. MøreRoyal® Wood Oil and Terrace Oil Exclusive contain antifungal agents to reduce the formation of surface fungi.

Terrace boards treated with MøreRoyal® oil remain wet on the surface after rain, as the water is not absorbed by the boards in the same way as a non-oiled terrace. Resin deposits should be brushed or scraped off before applying new oil. We recommend allowing resin deposits to crystallise, when they will disappear by themselves.

THE RANGE

MoreRoyal®



TERRACE BOARD DUO

2-SIDED REVERSIBLE
RB10 BROWN

This board has a smooth and a grooved side. This lets you choose to reflect personal taste and design objectives. The grooved side is defined as the A-side, but both give an excellent result.



28x45 DUO
NOBB 43982986

Coverage: 22.3 lm per m2



28x70 DUO
NOBB 43983096

Coverage: 14.3 lm per m2



28x95 DUO
NOBB 43983202

Coverage: 10.6 lm per m2



28x120 DUO
NOBB 43983274

Coverage: 8.4 lm per m2



28x145 DUO
NOBB 43983376

Coverage: 6.9 lm per m2

FASTENINGS

Stainless steel A2 or acid-resistant A4 fastenings must be used for boards in MoreRoyal® for cladding, terraces and timber constructions. Acid-resistant A4 fastenings must always be used in maritime and salty environments.

Stainless/acid-resistant steel is highly resistant to corrosion, because it is chrome-plated. This ensures a quality, attractive result, with a long lifetime for materials and screws.



THE RANGE

MoreRoyal®



TERRACE BOARD DUO

2-SIDED REVERSIBLE
ROO NEUTRAL

This board has a smooth and a grooved side. This lets you choose to reflect personal taste and design objectives. The grooved side is defined as the A-side, but both give an excellent result.

28x45 DUO
NOBB 43982884

Coverage: 22.3 lm per m2



28x70 DUO
NOBB 43983062

Coverage: 14.3 lm per m2



28x95 DUO
NOBB 43983153

Coverage: 10.6 lm per m2



28x120 DUO
NOBB 43983240

Coverage: 8.4 lm per m2



28x145 DUO
NOBB 43983312

Coverage: 6.9 lm per m2



DUO – REVERSIBLE

A DUO terrace board is two-sided and reversible. That means you can choose which side (grooved or smooth) to have facing upwards. And if you're extra creative, you can even combine dimensions to form your own patterns and frames. Go to pages 16-17 for more details on patterns and frames.

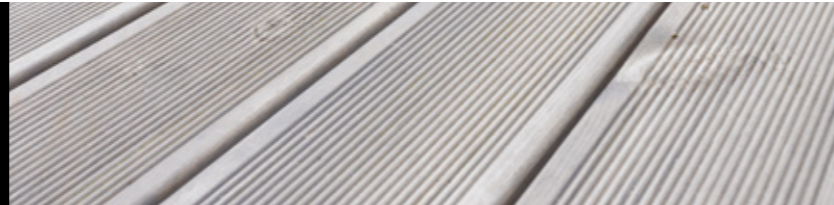


GO TO PAGES 8-9
FOR MORE DETAILS ON
COLOURS AND TONES.

Terrace board DUO
neutral ROO – smooth side up
Photo: Lediard Foto

THE RANGE

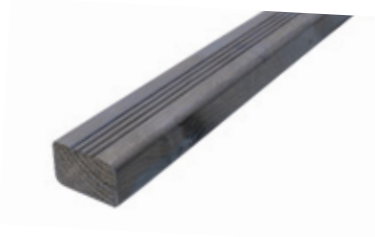
MoreRoyal®



TERRACE BOARD UNO

1-SIDED, RG25 GREY

Sold as a grooved board. The smooth B-side can be used if so desired by the customers, but the manufacturer cannot guarantee cosmetic appearance on this side due to grain marks.



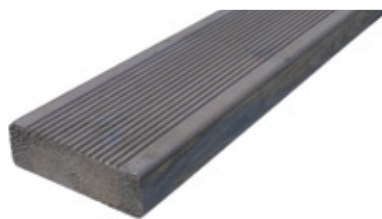
28x45 UNO
NOBB 47258498

Coverage: 22.3 lm per m2



28x70 UNO
NOBB 47258502

Coverage: 14.3 lm per m2



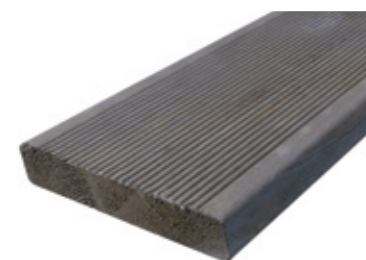
28x95 UNO
NOBB 47258517

Coverage: 10.6 lm per m2



28x120 UNO
NOBB 47258521

Coverage: 8.4 lm per m2



28x145 UNO
NOBB 47258536

Coverage: 6.9 lm per m2



UNO WITH GROOVES

Terrace board UNO with grooves in MoreRoyal® grey (RG25), laid grooved side up. Fully coloured in an attractive, transparent grey. Perfect for the modern home or a holiday cottage.

The grey colour changes over time, becoming fainter and clearer after the first winter.

INSTALLATION TIPS

MoreRoyal®

FRAMES



SIMPLE FRAME

A terrace board in the same or different dimensions from the rest of the terrace is laid all the way around to conceal the end wood. Choose the smooth or grooved side upwards.



DOUBLE FRAME

A double frame provides an even more impressive frame, providing an attractive finishing touch.

MAKE A PLAN

When building a terrace, we recommend having a good plan. Think carefully about how you want your terrace, and make good use of the tips we provide on pages 18-19. You will be more satisfied with the end result, and building your terrace will be easier. The actual finish and details are what decides how pleased you will be in the end, and are therefore worth spending a bit of time on.

ALTERNATIVE CORNERS



MITRED CORNER

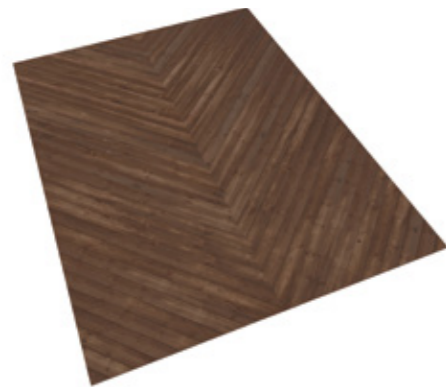


CLIPPED CORNER



CORNER WITH OVERLAP

ALTERNATIVE LAYING PATTERNS



HERRINGBONE



DIAGONAL



CONCENTRIC

LAYING INSTRUCTIONS

Laying guide: Lay MøreRoyal® terrace board on joists C/C 600 mm apart. The boards have been dried during production, and we recommend at least a 2 mm gap between them (the blade thickness of a folding ruler). Use stainless steel A2 or acid-resistant A4 screws for fastening.

NB: Seal all cut surfaces with MøreRoyal® Wood Oil/Terrace Oil.

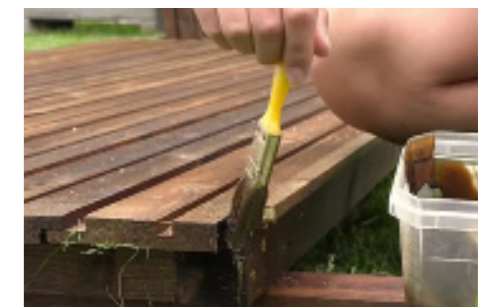
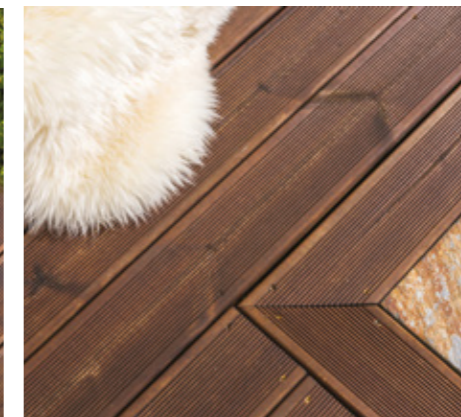
CONCEALED FASTENINGS

If you want a terrace surface with no visible screws, there are now tools on the market you can use. The terrace screw is inserted quite simply in the sides of the board for concealment. You will need a specially-adapted tool and bits. The tool ensures equal distances between each terrace board, and the angle at which the screw goes in ensures strong, durable installation. The end result is very attractive, with no visible screws, splinters or cracks. Ask your local builder's merchants for details.

SCREWING INTO EDGES AND CORNERS

A MøreRoyal® terrace board has been boiled hard, and will therefore not split as easily as a standard board when screwing into edges and corners, or screwing in from the side, for example, to lock a corner.

EXAMPLES OF DETAILS



PLAN YOUR TERRACE

MoreRoyal®

We recommend making a simple diagram before starting on your terrace project. Where will it be best to place a table, where do you need privacy, where will the grill go, where do you need an overhang? Click on our diagrams, and consider whether any of the tips are something you could benefit from. See also pages 8-9 on laying patterns/framing and corners. Once you are well under way, the job becomes easier and the end result better!

Storage

Think of places you can use for storage while you are building.

- A floor hatch?
- Drawers in steps
- Benches/boxes for ledges
- Cushion boxes made of MULTiposts/terrace boards
- Your own storage shed

Screening

Do you need screens against wind, sunlight and rain?

- Windbreaks in wood, with or without glass
- Textile windbreaks
- Textile canopies

Visual effects/framing

Decide whether you want different zones on your terrace marked out with frames and patterns in the terrace floor.

Combinations of smooth/grooved sides and different board dimensions are great for framing and marking zones, entrance, round posts, steps, ledges and so on.

See page 8 for tips on patterns.

Zones

Think about different zones on your terrace suitable for different purposes according to light/shade dispersion. Such zones also have different needs concerning looking in, views out, screening/overhang, light and so on.

Examples of popular zones

- Dining area
- Grill area
- Relaxing area
- Sunbathing area

Platforms/different levels/steps

Could your terrace be built on different levels? This is a great technique for breaking up large surfaces, making the terrace more inviting and exciting.

Perhaps steps/level dividers could be built as a bench or storage box? The bigger the terrace, the more advisable it is to break up large surfaces.

Get going!

Under the roof

Perhaps you're going to create your own herb garden along with your terrace, sheltered from wind and weather, where you can extend a summer season, have room for storage and somewhere to put your garden furniture in the winter?

Lots of different models/sizes in the PlusConcept by NOA ByggDesign. Go to www.talgo.no for more details.

Lighting

Where is the best place to put lighting?

- On walls
- Recessed in the terrace
- Along walkways
- On railings/windbreaks
- In plant boxes

Pathways/reinforcement/underlay

Where will paths naturally lie?

This is where there will be the most wear and tear.

- Reinforcement with gravel
- Reinforcement using railway sleepers (coarse materials, see page 25.)
- Gravel as underlay for a grill/fireplace

Looking in/out

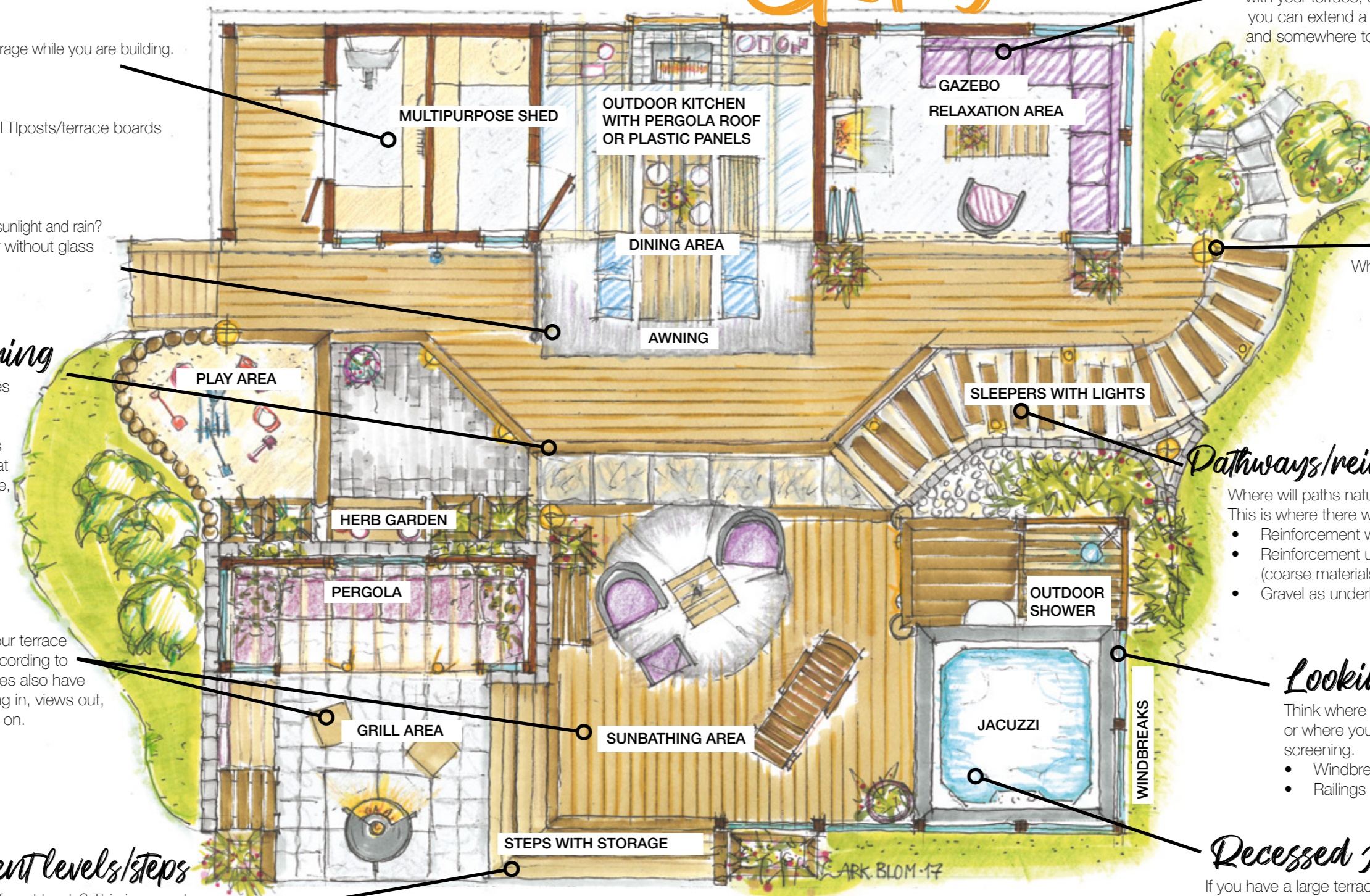
Think where you want to prevent anyone looking in, or where you want to look out when choosing screening.

- Windbreaks in wood, with or without glass
- Railings in wood or glass

Recessed jacuzzi/plant bed

If you have a large terrace, then plant boxes, a jacuzzi or some other feature might be great built-in to the terrace floor!

- Built of MULTiposts/terrace boards
- Built of railway sleepers
- Built in stone



PROJECTS

MoreRoyal®

MoreRoyal® is frequently used for big projects where there are high requirements for low maintenance and long service life. Cladding, wooden roofs and terraces give a colourful end result.



Atrium garden, Cato centre
Photo: CB Foto



Quality Hotell Langesund
Photo: Per Flåthe



Sorenga, Oslo. Builder: Veidekke

Contact us to talk with our project expert for pricing and guidance.

GOOD ARGUMENTS

- Coloured on all sides
- No minor repairs after installation
- Stable material
- Lightweight materials
- Can be installed any time of year
- 6 colour schemes



Quality Hotell Langesund
Photo: Per Flåthe



Clarion Hotel Congress, Trondheim



Sorenga, Oslo. Builder: Veidekke



Sorenga, Oslo. Builder: Veidekke



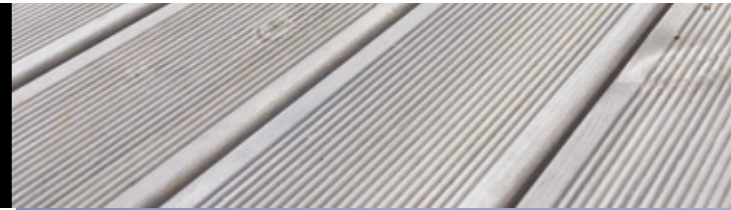
Terrace board UNO with grooves
Grey RG26, 28x145
Photo: Leclard Foto

OTHER PRODUCTS

MoreRoyal®

CLADDING

MøreRoyal® cladding comes in 6 colours: brown, grey, neutral, red, ochre and the latest, Alpine black. Cladding comes in all our usual profiles and dimensions, and is frequently used for major projects and on private homes.



Cladding neutral R00
Photo: Marthe Mølre

WOODEN ROOFS

MøreRoyal® wooden roofs are becoming more and more a feature of modern construction, and of course traditional buildings. Our wooden roofs come in neutral, Alpine black, brown and grey, and in 2 reversible dimensions, making different visual appearances possible for a roof, depending on the width of the laths above and below.



Wooden roof and cladding, grey RG25
Photo: Inger Marie Grini

TALGØ PLUSCONCEPT

PlusConcept by NOA ByggDesign is a series of architect-developed building kits for the garden, within the categories of gazebos, multipurpose sheds and pergolas. They are flexible and multi-purpose, and simple to erect within one day. All-in price and fully treated – ready for use!



Gazebo 1001 brown RB10

TALGØ OUTLIVING

OutLiving is our concept for the outdoors, based on MøreRoyal® and in which everything fits together. Garden furniture, MULTiposts, wooden tiles, stone, step sides, railway sleepers, windbreaks, awnings, parasols, etc.



Railway sleepers + laths 48x48 brown RB10



SOLID AND TOUGH

Solid railway sleepers with their rustic surface have become very popular for various uses in the garden. They are frequently used for walkways, retaining walls, as steps and platforms, and borders around beds or terraces.

They come in grey and brown, and in lengths of up to 1.80 m.

They are class A impregnated – approved for ground contact.

RAILWAY SLEEPERS MoreRoyal®



RAILWAY SLEEPER 7.5 X 20 X 180

BROWN NOBB 46265221
GREY NOBB 49212872



STEPS



WALKWAYS



RETAINING WALLS/BORDERS/BEDS





GARDEN SLEEPERS

MoreRoyal®



GARDEN SLEEPER 10 X 12 X 250

BROWN NOBB 46265198
GREY NOBB 49212853



In common with railway sleepers, garden sleepers have also found their way into Norwegian gardens. They are used as retaining walls, for borders and beds.

They have 2 flat and 2 curved sides.

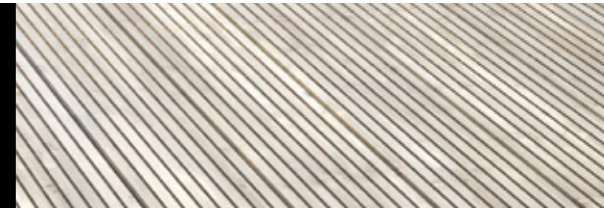
They come in grey and brown, and in lengths of up to 2.50 m.

They are class A impregnated – approved for ground contact.





DECKING MoreRoyal®



FOR LARGE PROJECTS AND PRIVATE DECKS

Ports, jetties and shorelines have come into focus in many towns as part of urban renewal, renovation and infrastructure building, involving projects of all sizes.

We have also seen a number of private marinas and jetties built along the coast.

Talgø have developed the Decking DUO, a thick reversible decking plank, ideal for such uses.

Decking DUO has a planed, profiled side with V-shaped grooves, and a side with no profile. The unprofiled side has a coarse cut surface, and is ideal for rustic environments.

The collection comes in 3 thicknesses, and 4 different colours.

FASTENINGS

In maritime environments, A4 fastenings must be used for MoreRoyal® – stainless and acid-resistant steel.

PROJECT SUPPLIES

We deliver in standard lengths, but can provide lengths cut to order for projects.

INSTALLATION

Timber used in saltwater can be attacked by wood-boring insects, such as the shipworm and the gribble. These live in wood, and can cause extensive damage very quickly. To avoid the problem, the wood must be permanently or regularly immersed in seawater. The best thing therefore is to keep the wood outside tidal zones, i.e. above the area covered by high tide.

DIMENSIONS



28x145

34x145

45x145

Decking measurements, all thicknesses:
6.9 lm per m2

COLOURS



RG.25 GREY

RB.10 BROWN

28x145 NOBB 51908825
34x145 NOBB 51908844
45x145 NOBB 52099505

28x145 NOBB 51908814
34x145 NOBB 51908833
45x145 NOBB 52099494



RS.25 ALPINE BLACK

RO.0 NEUTRAL

28x145 NOBB 51909321
34x145 NOBB 51909336
45x145 NOBB 52099532

28x145 NOBB 51938925
34x145 NOBB 51938933
45x145 NOBB 52099486



Decking DUO is reversible, and whether you want to use the profiled or the plain side as the A-side is up to you. This gives you the opportunity to create patterns and vary the appearance by combining dimensions and surfaces.

WINDBREAKS MoreRoyal®

MODERN AND SOLID

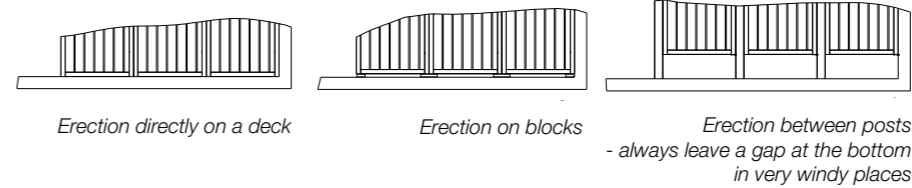
A new generation of Norwegian-made windbreaks in MøreRoyal® with a modern design and compatibility with gazebos and multi-purpose sheds from Talgø PlusConcept.



REMEMBER
Always take into account local wind conditions. Always assess the support necessary. Ask your local MøreRoyal® dealer

Windbreak grey RG.25
Decking DUO
Grey RG25, 34x115

- Screens for privacy and as windbreaks can be solid walls or open to provide a view with glass.
- The same cladding on both sides for an attractive, uniform appearance.
- No visible screws on wall surfaces.
- Easy to erect – no thick posts where walls meet, but posts can be used if many are to be erected in a row, and the wall needs bracing.
- 4 different types of wall elements available.
- All glass in 4 mm hardened glass.
- Solid 36x73 millimetre frame.
- Can be fastened to an existing structure or freestanding using posts.
- Can be fastened to decks made of wood or concrete, or direct on rock.



WINDBREAK VARIANTS

MøreRoyal® GREY RG.25



TOP JOINT:
ALT1
A standard 28x95 mm terrace board to join the elements to the top.
NOBB 43983202
ALT 2:
Balcony top angled 34/22x120
NOBB 51945335 (brown)
NOBB 51945346 (grey)



MøreRoyal® BROWN RB.10



CORNER JOINT:
Use MULTiposts (end or corner) 7x7x200
NOBB 46167520/46167516 (brown)
NOBB 49213201/49213152 (grey)



MULTIPOSTS MoreRoyal®



The MULTipost is a post custom-designed for DIY enthusiasts who love to work on their own projects. It features a pre-cut groove exactly the width of our terrace boards. Slip a terrace board into the groove, remember your days playing with Lego and get going!

We have produced a handy inspirational leaflet for things you can make yourself. There are photos, drawings, material lists and step-by-step instructions. Download the leaflet from www.talgo.no, and from certain leading builder's merchants stocking MøreRoyal®.



MULTipost Joint
NOBB BROWN 46167535
NOBB GREY 49213178



MULTipost Corner
NOBB BROWN 46167516
NOBB GREY 49213152



MULTipost End
NOBB BROWN 46167520
NOBB GREY 49213201



MULTiposts with pre-cut groove for terrace boards



Herb box
MULTipost corner brown RB10
Terrace board DUO brown RB10
Photo: Lediard foto



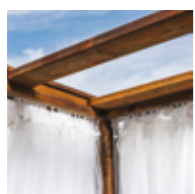
Daybed with curtains and mattress.



Drinks cooler with chilled container



Adjustable sun lounger





OUTDOOR KITCHEN

DESCRIPTION:

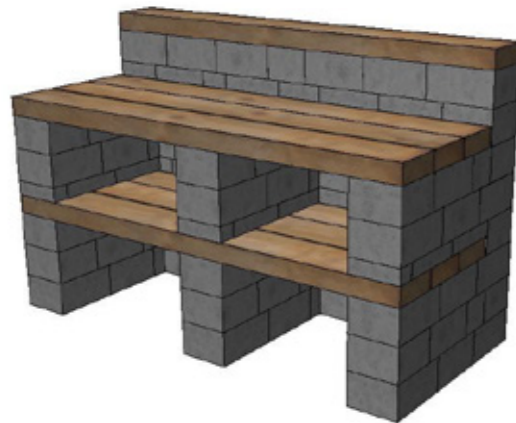
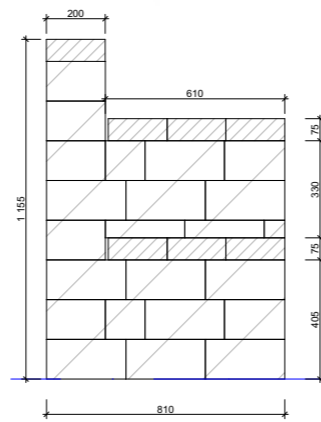
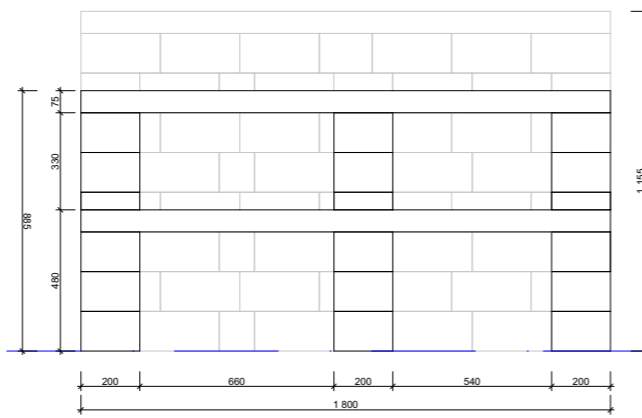
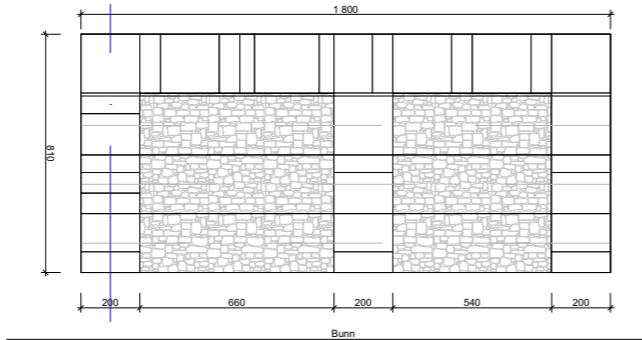
An outdoor kitchen can be created by stacking 'Herregård stones' or the like (27x20x13.5 and 27x20x6).

The rear wall, sides and centre support should be built with the stones overlapping to achieve maximum stability. Build three layers of stones (27x20x13.5) and special cement. Lie three sleepers across them full length (180cm) for shelves, plugged and screwed to the stones working from the front edge.

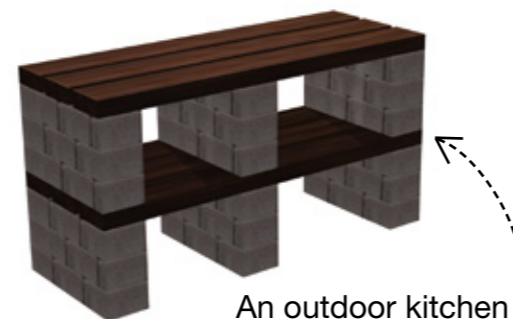
Cement one layer of stones 27X20X13.5 on the rear wall. Build one layer of stones 27x20x6 on the sleepers (shelf) for the sides and centre support. Continue with 2 layers of stones 27x20x13.5 overlapped together with the rear wall, sides and centre support.

Secure three sleepers across them full length (180cm) for the worktop, plugged and screwed to the stones working from the front edge.

Build and cement two layers of stones 27X20X13.5 on the rear wall and finish with a full length sleeper (180cm) for the top, plugged and screwed into the stones.



There are lots more ideas and descriptions in our catalogue



An outdoor kitchen wcan also have no rear wall

MATERIAL LIST

PART	QUANT.	TYPE	DIM.	LENGTH
Sleepers	6	Railway sleepers	7.5x20x180	180 cm
Whole stones	96	'Herregårdsten'	27x20x13.5	Adjust
Half stones	9	'Herregårdsten'	27x20x6	Adjust
Cement together using special cement				



Adjust size by cutting the sleepers to length and adjusting the number of 'Herregårdsten'

PlusConcept



TALGØ PLUSCONCEPT MoreRoyal®



Element-based gazebos built in modules of 60 cm and 120 cm wide, 220 cm high. All finished buildings are 266 cm deep. (outer dimensions). The modules have different designs; solid, with various glass panes with and without bars. These can be combined in different ways to give the perfect solution for the individual customer.

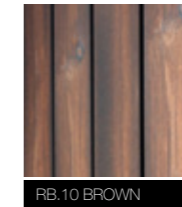


NOA design fra
Arkitektkontoret Blom AS

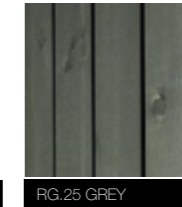
Roy Blom, of Arkitektkontoret Blom and his team designed NOA ByggDesign, a concept for modular solutions with considerable flexibility and discretion, high cost-effectiveness and modern design!

COLOURS

All building kits come in 2 colours MøreRoyal® brown and MøreRoyal® grey in low maintenance materials with long lifetime.



RB.10 BROWN



RG.25 GREY

FOLLOW THE

development of the Talgø PlusConcept, and keep an eye on new products at www.talgo.no

GAZEBO MOD 1001

A gazebo with built-in 60 or 120 cm shed. Fully reversible with completely interchangeable elements. 240x360 cm.



GAZEBO MOD 1002

Open, spacious gazebos with large glass panes for plenty of daylight inside. Elements are fully interchangeable. 240x360 cm.



See installation video on YouTube

ARCHITECT-DESIGNED - GREAT VISUAL DESIGN

The entire system has more than a touch of good aesthetics and design, thanks to the architect. The design fits in well in various settings, whether an urban home or a mountain hut by a lake, in parks and open areas, by public or commercial buildings, or elsewhere.

EASY TO INSTALL - DO IT YOURSELF IN NO TIME AT ALL!

The system is based on prefabricated elements, designed for extremely simple erection by two people without professional help, and most people finish the job in a couple of active days.

PRE-TREATED - INSIDE AND OUTSIDE

Using MøreRoyal®-treated materials, the entire kit is already coloured, pressure-impregnated and boiled in oil with all the great characteristics of MøreRoyal® materials included. Once erected, the building is ready to use, avoiding you having to paint or stain.

FLEXIBLE SYSTEM LOTS OF OPTIONS

Each kit supplied by us has the advantage of being simply adapted to your own requirements by swapping the elements around. Assembly instructions included for alternatives. These kits provide a unique opportunity to build yourself, regardless of how inept you may be.

ALL-IN PRICE

The kits are priced all-in apart from a floor (this is omitted as most customers prefer to place their building on an existing floor or foundation). No hidden extras or surprises. All you need is included with the kit.

ROOF

The kit comes complete with roofing felt and roof underlay.

GLASS

All glass elements are supplied with single-layer, 4 mm scratch-proof hardened glass.

MAINTENANCE

MoreRoyal®

All wood needs maintenance, including MøreRoyal®-impregnated timber. But maintenance of MøreRoyal®-impregnated timber is much lower and simpler than for other types of timber products. To follow is a guide to maintenance and freshening up the appearance of MøreRoyal®-impregnated timber.

HOW TO MAINTAIN MøreRoyal®-TREATED TIMBER

Wear and tear

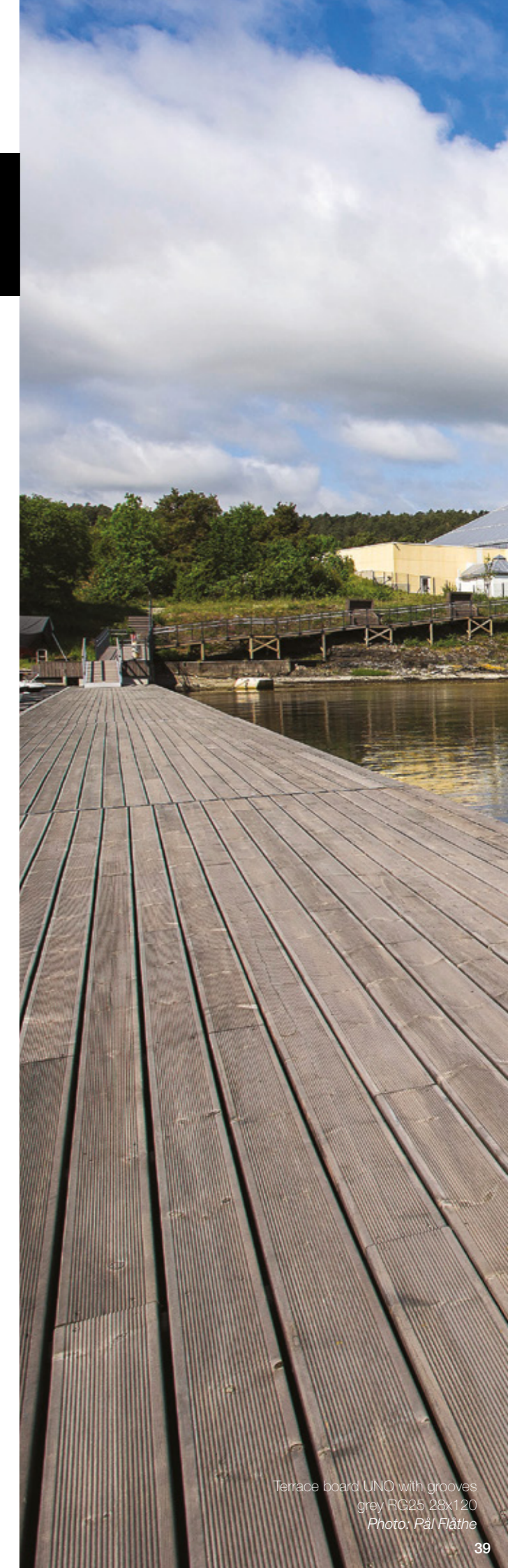
Wind and weather will take their toll of timber. UV radiation from the sun bleaches pigments, making the wood turn grey. Rain will gradually leach out oils and pigments. Mechanical wear from feet, garden furniture, rain and snow will also take their toll. The same applies to timber roofs, especially in the mountains, where snowfalls are heavier and stay longer. The large quantities of oil boiled into the wood will always remain, but the outer surface needs to be topped-up, not only for cosmetic reasons, but also to maintain quality.

Colours and time

Royal-impregnated timber comes in 5 colours in addition to neutral. They are ochre, red, brown, grey and Alpine black. Neutral is a golden brown colour due to the large quantity of oil boiled into the wood. But it will relatively quickly turn grey. We recommend it's used mainly on terraces, noise barriers, fences and roof boards for that reason. But there's nothing to stop neutral being used for other purposes if you want the wood to take on a grey appearance. Brown, ochre, red, grey and Alpine black will gradually fade due to the effects of the weather. Those facing the south and west will fade first. Red will fade before brown, ochre and Alpine black, while grey will simply become greyer over the years. In terms of quality, there is no difference between the different stains. A terrace can normally go 6 to -7 years before the first maintenance treatment, if cosmetic appearance is less of a priority. The maintenance interval for cladding is even longer, as vertical surfaces can usually go between 10-20 years before maintenance is needed to protect the properties of the wood.



Terrace board UNO with grooves
grey RG25 28x145
Photo: TAMM Protozoan/Ventrilo oppussing



Terrace board UNO with grooves
grey RG25 28x120
Photo: Pål Flåthe

OIL MøreRoyal®

PRODUCTS
SPECIALLY-ADAPTED
MøreRoyal®
TREATED
TIMBER.

MAINTENANCE – PAINTING

Always use MøreRoyal® Wood Oil (cut surfaces/cladding), or MøreRoyal® EXCLUSIVE Terrace Oil (for terraces), with or without colour pigments for maintenance of MøreRoyal® impregnated timber. If you want to change colour, you can stain/paint over using a high-quality product. Further maintenance must then continue with the stain/paint used.

DURING INSTALLATION – TREATING CUT SURFACES

Apply the same colour MøreRoyal® Wood Oil as used on the materials on all cut surfaces to ensure quality and appearance. When the wood has faded and weathered after a few years, a new coat of colour pigment will need to be applied to the most exposed areas. Make sure the wood is clean and dry when applying. Do not use strong solvents, as they will dissolve the oil still in the wood – and the new oil applied.

CLEANING

Use a mild household detergent and garden hose at normal pressure. Pressure washers can damage the wood and remove pigments that should not be removed. Water and a brush are sufficient for annual cleaning.

THE TERRACE

MøreRoyal® EXCLUSIVE Terrace Oil, with or without colour, is recommended for terraces. Apply a thick coat. Excess oil will harden as a surface layer, and form a film. Dust and shavings can easily stick to a film of excess oil. Avoid applying too much to prevent fungi attack. Fungi can also flourish if the wood is not sufficiently dry or clean before oil is applied. Fungi does not damage the wood, is relatively easy to remove, but does tend to reappear. Fungi attack is not covered by the warranty. MøreRoyal® EXCLUSIVE Terrace Oil and MøreRoyal® Wood Oil can both be applied by roller or brush.

Remember that cloths and filler etc. must be burned/soaked in water immediately to prevent self-combustion.



**MøreRoyal® Wood Oil
FOR WALLS AND ROOFS**

Comes in 2.7 l tubs

NOBB 45561320 red
NOBB 45561301 brown
NOBB 45561316 yellow
NOBB 49432740 grey
NOBB 50822077 Alpine black
NOBB 45100561 clear



**MøreRoyal®
EXCLUSIVE TERRACE OIL**

Comes in 2.7 l tubs

NOBB 50570993 clear
NOBB 50571004 brown
NOBB 50571012 grey

CHOOSING OIL

MøreRoyal® oil is available in the same colours as the original materials. We recommend using clear oil to restore the original colour of the materials in principle. For example, if you decide to use brown oil on brown materials, the result will be a darker, mahogany-type colour. It's a matter of taste.

Coloured wood oil is always used to treat cut surfaces. This is to seal the ends against moisture permeation, which can lead to rot. Coloured oil also conceals minor visible joints.

Using our own maintenance products is a condition of the warranty.





Even though the A-side of grey terrace boards is the grooved side, there is nothing to prevent you using the smooth side, as can be seen from the photo. In terms of quality, there is no difference, but grain marks can be seen on the smooth side, and the grooved side is regarded as having a better cosmetic appearance.

Terrace board UNO with grooves – laid smooth side up.
28x145, grey RG25
Photo: TAMM Produksjon/Ventrilo oppussing

WORTH KNOWING MoreRoyal®



STORING MØREROYAL® TIMBER

Storage on site: Never under plastic sheeting or tarpaulins. Make sure there's plenty of air!

In common with standard pressure-impregnated timber, even MoreRoyal®-impregnated timber can discolour due to air pollution and mould over time.

Heat and humidity mean a risk of mould. The risk is highest in July to September, when air humidity and warmth are highest.

If stored outdoors, rainwater can get into the packaging, and be slow to evaporate again. Plastic packaging also represents a risk of condensation and subsequent surface fungi.

The mould that can appear is a surface fungi which does not penetrate into the wood, and is easy to wash/brush off. It will disappear on its own once the timber is in use. Mould only has temporary cosmetic significance, and will not damage the timber.

Simple advice for avoiding fungi attacks:

- Impregnated wood/MoreRoyal®-impregnated wood must be stored where air can circulate, and preferably under cover.
- Do not store packages close together, preventing air circulation.
- If fungi is found, move the affected packages somewhere else to reduce the risk of spreading (fungi spores are airborne).

Unfortunately, there is no guarantee that fungi will not occur, but the above measures can reduce the risk.

WASTE HANDLING

Copper- and Royal-impregnated timber must be taken to an approved, private or municipal disposal centre. It can be burned in an incinerator, and is not classed as hazardous waste. Cut-offs and scraps from building will usually be copper- or Royal-impregnated, unless from projects with special safety requirements. Nevertheless, it will be easy to establish which kind of timber it is if you save the declaration from the vendor.

When demolishing buildings and structures erected before 2003, there is a good chance that any impregnated wood is CCA-impregnated. This is hazardous waste. If you cannot establish what kind of impregnation has been used, the timber will have to be classed as hazardous waste when disposing of it.

Sources: Jon Fonnliid Larsen, Consultant, Norwegian Climate and Pollution Agency (SFT)



Terrace board UNO with grooves
28x145, grey RG25
Photo: TAMM Produksjon/Ventrilo oppussing

LIVING WOOD

MoreRoyal®



LIVING WOOD

Wood is a beautiful, but organic material. No one can fully predict exactly how a given piece will change over time. Wood is affected by its surroundings. A wall exposed to sunlight will be affected by heat and light in a different way to one in shadow; a wall exposed to wind and rain will be more exposed compared to one in shelter. A certain amount of contraction, expansion, cracking and resin will always occur in a living piece of timber.

A MøreRoyal®-treated item will attain a number of properties through impregnation and being boiled in royal oil that make it more resistant to wind and weather, but even with double protection, it is still an organic product with all the problems that entails. There can be multiple consequences, and we want anyone who buys MøreRoyal® products to be aware of the following facts:

- Depending on the composition of the wood the product is made from, the MøreRoyal® oil will be absorbed in different ways during production. Because the colours in the MøreRoyal® collection are transparent, there will be more variations in shades not seen to the same degree as if it was stained or painted. The effects of wind, weather and sunlight will affect the colours even more once the products are used for a construction. All MøreRoyal® colours will gradually fade with the effects of the weather. Those facing the south and west will fade first. In terms of quality, there is no difference however. The oil is boiled into the wood, and protects it.
- MøreRoyal®-treated timber products rest on laths during production, which can leave striped marks.
- Knots and resin are a natural part of pine, and their appearance on new MøreRoyal® timber cannot be avoided. The strength of their appearance will vary based on the colour and weathering of the product, as darker colours tend to absorb more heat and therefore tend to have more prominent knots and resin stains. Resin particularly appears around knots, and will turn into white crystals that will disintegrate as the wood becomes more weathered. The extent of knots and resin will decline over time, and the wood will not be permanently damaged by the process in any way. Resin will eventually dry out and be worn away naturally, or you can accelerate the process by brushing it off if you so desire. Resin deposits are a natural part of the way wood behaves, and not a cause for complaint.
- We recommend careful installation work and correct maintenance using our recommended products. (See our care and maintenance documents for more details, go to our website at www.talgo.no)



Terrace board UNo with grooves
28x145, grey RG25
Photo: TAMM Produksjon/Ventrilo oppussing



Terrace board UNo with grooves
28x145, grey RG25
Photo: TAMM Produksjon/Ventrilo oppussing



FAQ – FREQUENTLY ASKED QUESTIONS

Where can I buy MøreRoyal®?

Sold via builders merchants. We have agreements with most reputable builders merchants in Norway.

Fastenings, which screws/nails should I use?

- Terrace: stainless steel A2 or acid-resistant A4
- Cladding/terrace/roof: stainless steel A2 or acid-resistant A4
- Maritime/coastal environments: acid-resistant A4

Surface oil on terrace boards – How can I remove surface oil?

Surface oil can occur especially on planed surfaces. The oil will quickly dry out, but can also be removed using a cloth soaked in White Spirit. Large concentrations of oil should be wiped off. Hands and clothes can get oily when handling MøreRoyal®.

White rings/flakes around knots – The terrace is not as described in the brochure! - What do I do?

These are called resin or pitch deposits. We use pine as our raw material, which contains resin. Resin can expand due to the effects of the weather, especially around knots. It appears as a yellow/white substance, but dries up and crystallises when exposed to the air. Resin can be scraped off, but it's best to let nature take its course. Resin will wear or be washed off over time, but will leave a lighter patch. Whether you want to re-oil your terrace is a cosmetic choice. Resin is not a manufacturing fault and is not covered by the warranty.

MøreRoyal® oil – where can I find MøreRoyal®oil/dealers?

Contact a builders merchant that sells MøreRoyal® timber.

Which oil should I use?

(MøreRoyal® Exclusive or MøreRoyal® Wood Oil)

MøreRoyal® Wood Oil with or without pigment should be used for cladding and roof boards. Use MøreRoyal® Exclusive terrace oil for terraces.

Can I use other types of paint/stains on MøreRoyal®-treated timber?

Yes, when changing colour, paint and stain can both be used (water- or oil-based). Remember that stain and paint are surface-coverings. You will lose the transparent surface that MøreRoyal® gives, along with some of its properties. See our care and maintenance documents for more details, go to our website at www.talgo.no

What kind of oil is used in the production of MøreRoyal®?

It's a mixture of organic and mineral (process oil and boiled linseed oil).

Is MøreRoyal® a new product?

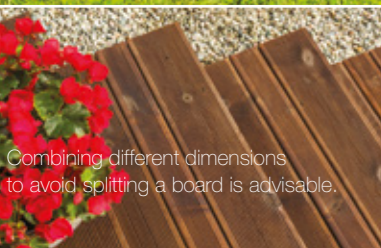
No, MøreRoyal® has been on the market for over 35 years, while Royal Impregnation has existed for over 50 years.

When can I make a warranty claim?

Any warranty claims must be made as soon as possible, and before the wood is put into use. Quality has been pre-approved for prefabricated products. Warranty claims must be addressed to the builders merchants stores where you bought the products, who will forward them to us via our warranty system.



Terrace board DUO
Brown RB10 28x120 + 28x70
Photo: Lediard Foto



Combining different dimensions
to avoid splitting a board is advisable.

Terrace board DUO
Brown RB10 28x120 + 28x70
Photo: Lediard Foto



MoreRoyal®

Talgo MøreTre AS, Industrivegen 7, 6652 Sumadal, Norway
Telefon: 71 65 80 00 - E-post: kundeservice.moreroyal@talgo.no

www.talgo.no

